



CADWORX® PLANT PROFESSIONAL

MOST COMPLETE RANGE OF TOOLS FOR EFFICIENT PLANT DESIGN

Capabilities:

- Intelligent 3D Piping Design
- Specification-driven design
- Efficient specification management
- Dynamic pipe supports
- Detailed bill of materials
- Equipment
- Ducting/cable trays
- Collision checking
- Isogen® isometrics
- Live database links
- Intelligent process diagrams
- Model/P&ID synchronization
- Links to stress analysis
- As-builts from Point Clouds

CADWorx® Plant Professional enables efficient greenfield plant design and is easy to use by providing robust tools for creating intelligent 3D plant models. CADWorx offers unparalleled flexibility and productivity to help thousands of corporations execute projects and rapidly create cost-effective deliverables. Brownfield projects can be developed

by leveraging point cloud data in combination with CADWorx Plant Professional.

Process and Instrumentation Diagrams

CADWorx P&ID software provides productivity tools to create intelligent process diagrams. With CADWorx P&ID Professional, CADWorx 3D plant models can be linked for change management control, making your 3D models synchronized with your P&IDs.

Software Automation Increases Productivity

The auto-routing capabilities of CADWorx allow piping designers to create 3D piping models quickly, accurately, and intuitively. The software allows the designer to focus on design tasks by generating 3D models automatically. Configurable Piping Rules assist designers during their workflow by automating piping component placement and ensure that project standards are adhered to which improves accuracy and yields cost savings during project execution.

Automatic Isometrics

Isometrics drawings can be produced from piping layouts or project databases. CADWorx Plant Professional includes Isogen® for automated isometric production.



Piping Specifications

Ready-to-use specifications in metric and imperial formats are included. The Specification Editor allows the creation of parametrically-driven piping specifications. Import utilities for Smart Reference Data provide the administrator with dozens of ready to use international specifications.

Database Links

Users can create accurate, user-configurable bills of material in the most popular database formats. The optional live database links in CADWorx provide real-time design status and valuable information backup to project administrators that have a desire to improve accuracy and efficiencies of their designers.

Equipment Modeling

Powerful equipment modeling capabilities are included to provide the most complete plant models. Designers can link to PV Elite to import equipment into their CADWorx Plant models or build their own libraries of equipment to suit the needs of their industry.

Walkthrough Capabilities

CADWorx Design Review is included for model visualization and 3D design coordination.

Collision Checking

CADWorx Clash Detection identifies conflicts in the current model and against externally referenced files. Options enable clashes to be reported at any time during the design process.

Ducting and Cable Trays

HVAC ducting and cable tray routines are included. Square, rectangular, round, and oval shapes, with transitions, are available.

Change Management

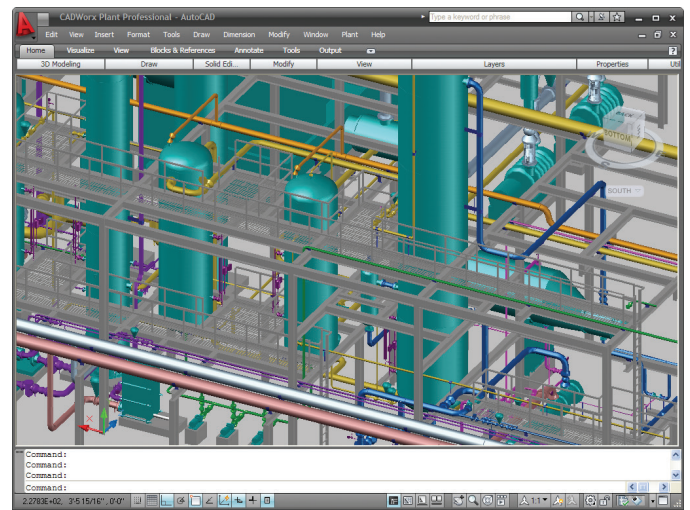
Automated and intuitive routines make changing piping sizes and specifications quick and easy.

Integration with Analysis Software

CADWorx has links to CAESAR II for pipe stress analysis and PV Elite for equipment analysis, allowing reuse of the 3D model components for a time-saving and accuracy-improving workflow solution.

Application Areas

- AutoCAD®-compatible
- BricsCAD®-compatible



CADWorx Plant Professional provides the most full-featured and cutting-edge tools for efficient and accurate design.

ABOUT HEXAGON

Hexagon is a global leader in digital solutions that create Autonomous Connected Ecosystems (ACE). Our industry-specific solutions create smart digital realities that improve productivity and quality across manufacturing, infrastructure, safety and mobility applications.

Hexagon's PPM division empowers its clients to transform unstructured information into a smart digital asset to visualize, build and manage structures and facilities of all complexities, ensuring safe and efficient operation throughout the entire lifecycle.

Hexagon (Nasdaq Stockholm: HEXA B) has approximately 20,000 employees in 50 countries and net sales of approximately 3.8bn EUR. Learn more at hexagon.com and follow us @HexagonAB.